

RAMMBERT

STUDIO AND VENUE HIRE





RAMBERT

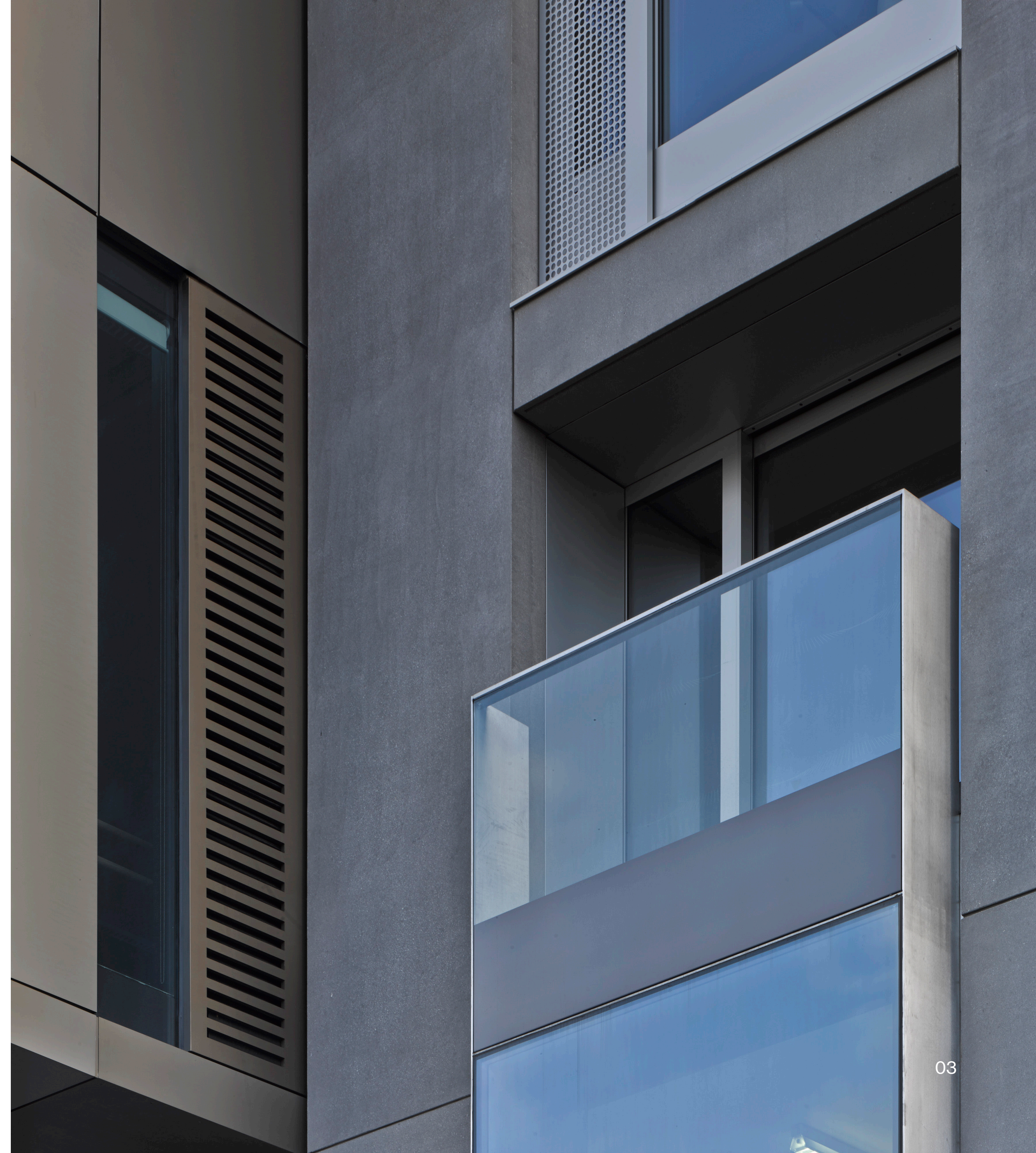
RAMBERT

Rambert's building in the heart of London's South Bank is a state-of-the-art facility, with over 750m2 of versatile spaces available for hire.

Home to Britain's national dance company, the building was opened by HM The Queen in 2014, and won a RIBA National Award as one of the best new buildings of the year.

Designed by leading architects Allies and Morrison, Rambert's fully accessible studios and meeting rooms are ideal for dance, theatre and orchestra rehearsals.

Highly adaptable and boasting double height studios with natural daylight, 3-phase power, mirrored walls, ballet barres and sprung floors, they can also be used for conferences, training days, product launches, fashion shows, dinners, receptions and other events.



SPACE OVERVIEW

MARIE RAMBERT

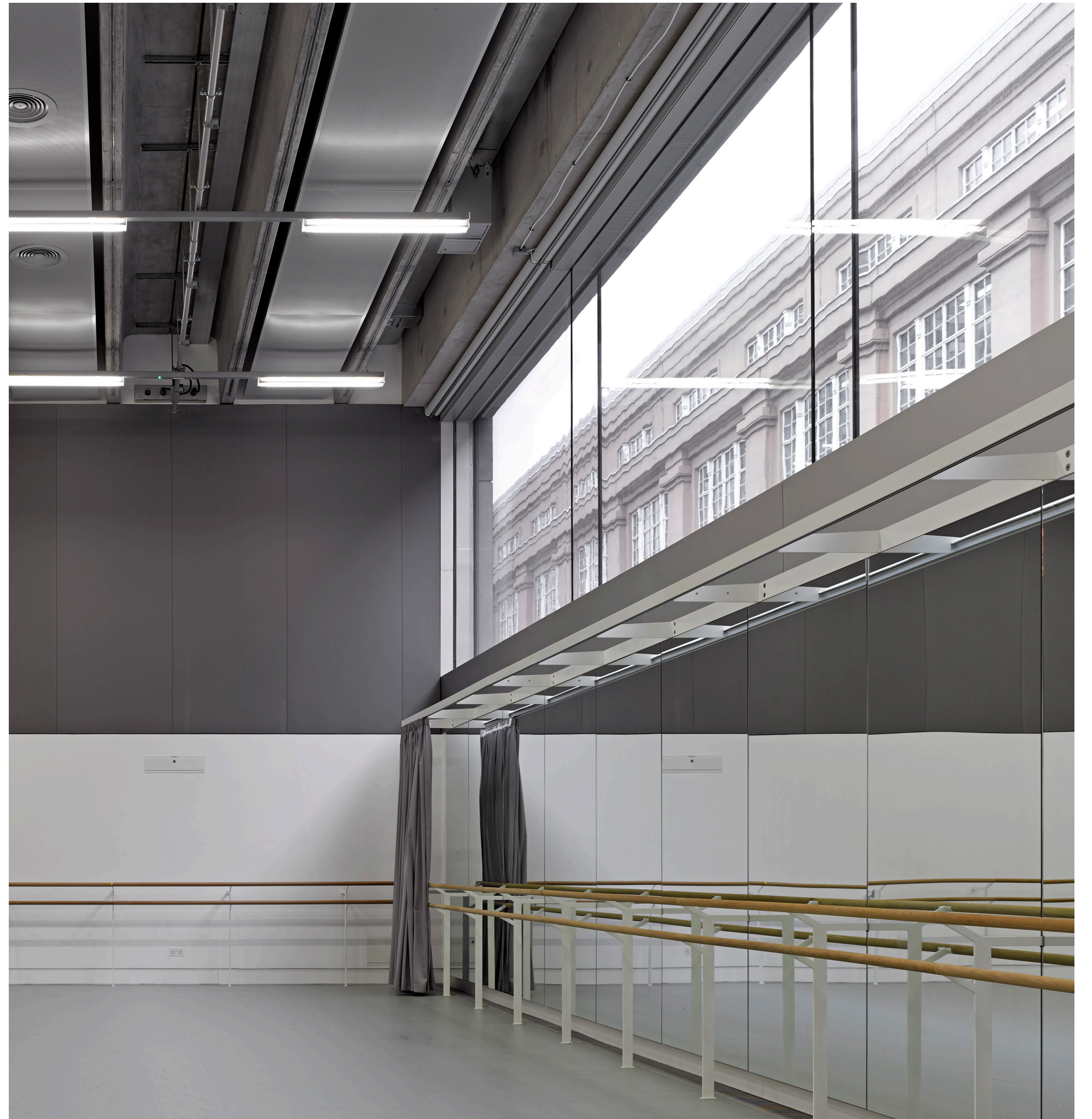
Studio

16.5m wide x 17m deep x 6m high
(alcove: 7.5m w x 3m d x 6m h)

Our flagship studio featuring:

- Retractable seating for 50
- 3-phase power
- Built-in sound system
- Sun and blackout blinds
- Ballet barres
- Mirrors with curtains
- Lighting rig
- Overlooking control room
- Recording studio rating NR22
- Grand piano



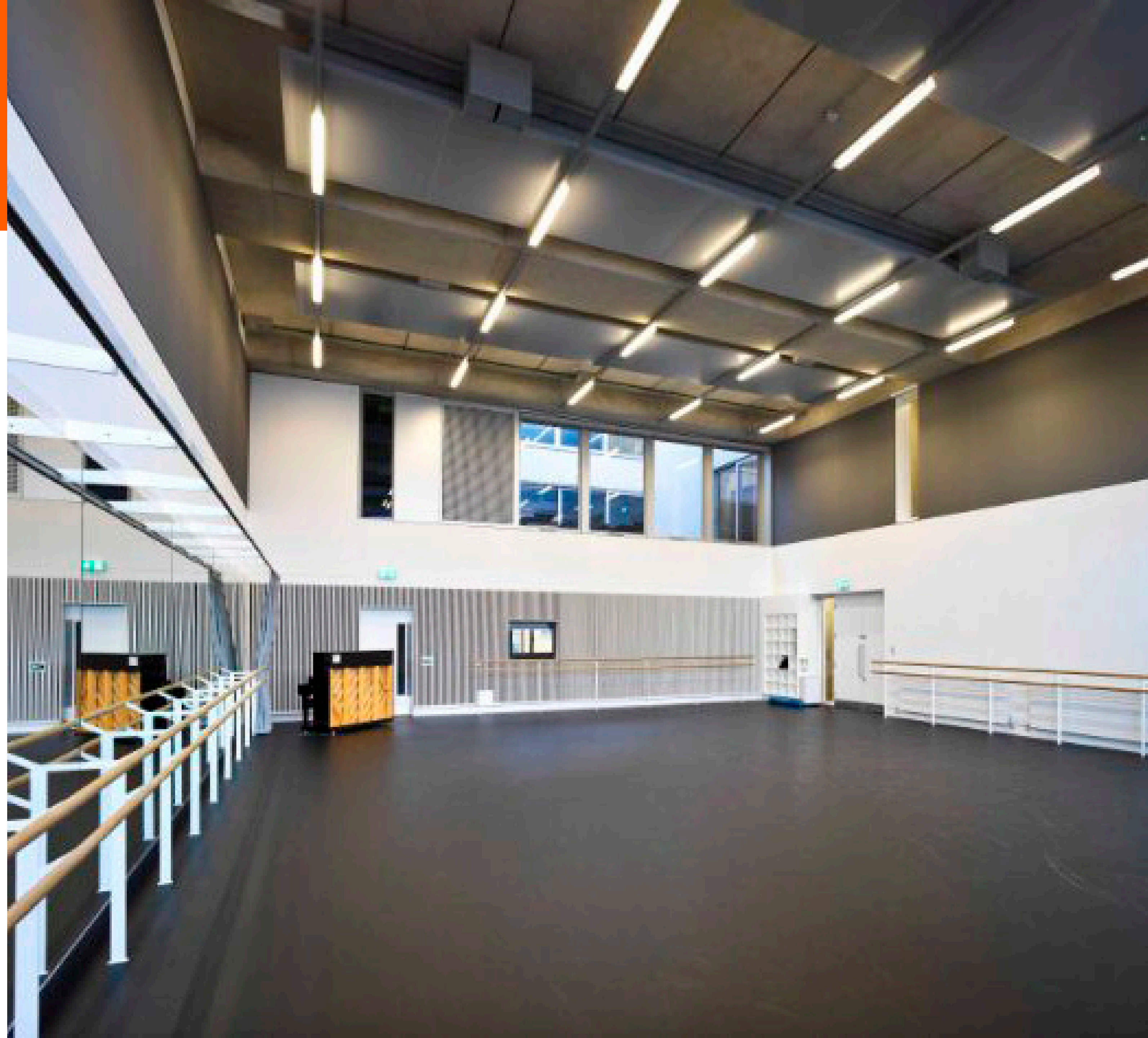


ANYA LINDEN

Studio

11.4m wide x 14m deep x 6m high

- Built-in sound system
- Sun and black out blinds
- Ballet barres
- Mirrors with curtains
- Overlooking control room
- Upright piano





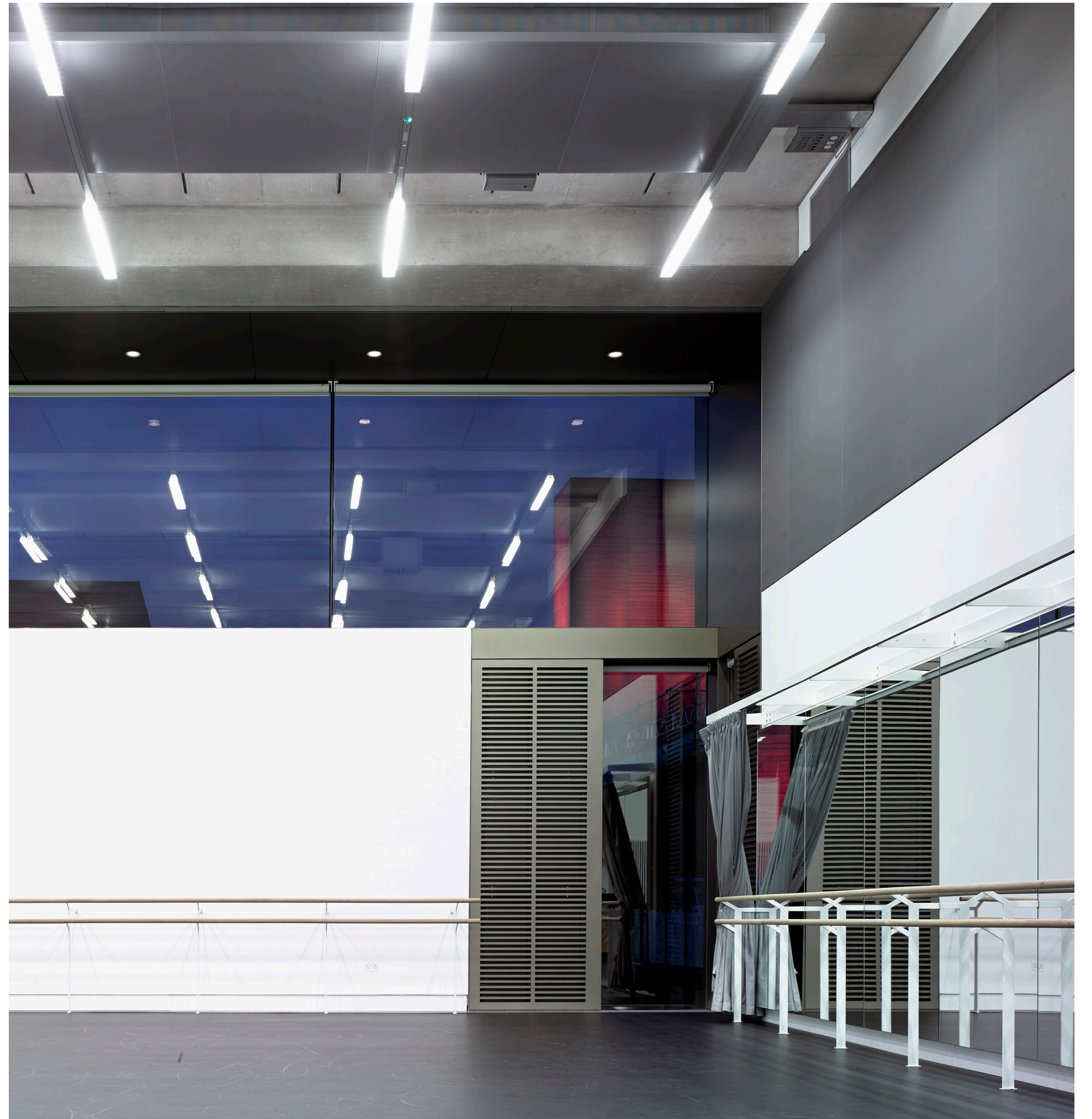
MERCURY

Studio

11.4m wide x 14m deep x 6m high

- Built-in sound system
- Sun and blackout blinds
- Ballet barres
- Mirrors with curtains
- Upright piano





KLEINWORT

Studio

4.15m wide x 6.95m deep x 2.5m high

Our smallest space, ideal for one on one training or small groups and meetings. Located next to the Linden Studio on level 2, featuring:

- Ballet barres
- Mirrors with curtains
- Accessible balcony

Please note, this space does not come with built-in sound system or piano.



PANTER

Room

4.15m wide x 6.95m deep x 2.5m high

Boardroom layout for 20 people (max), comes with wall mounted screen and conferencing facilities.



FACILITIES

Hirers of Rambert's facilities benefit from:

- Full technical support from an experienced team, available with prior arrangement
- Services from basic AV equipment to complex fit-ups, sound and LX design and operation
- High speed WIFI internet access throughout the building
- Sound and lighting equipment available to hire
- Chairs and tables available on request
- Internal touring sized loading bay and goods lift to all floors
- Fully staffed reception
- Passenger lift to all floors
- Changing rooms with showers and coin-operated lockers
- A fully accessible building, including accessible toilets and showers
- On street parking for Blue Badge holders, with step free access to the building
- Digital signage screens
- On-site osteopathy, sports massage and Pilates clinic
- Competitive rates, with charity discounts available

LOCATION

Rambert has an unbeatable central London location:

- On the South Bank beside Waterloo Bridge
- Five minute walk from Waterloo mainline and underground stations
- Next to Doon Street and National Theatre car parks

CONTACT

RAMBERT

For availability and rates, or to discuss your individual requirements or arrange a visit, contact us on 020 8630 0600 or email studio.hire@rambert.org.uk

Rambert
99 Upper Ground
London SE1 9PP

Ballet Rambert Ltd registered
no 01930699 VAT no 118 6401 28
Registered charity no 326926

Photos by: Nick Guttridge, Alex Harvey-Brown, Margaret Howell Limited, Pierre Tappon

It's Your Move
rambert.org.uk
rambertplus.com

